



POULTRY-FARMER TF30.7 - TF30.9



New Merlo Compact range

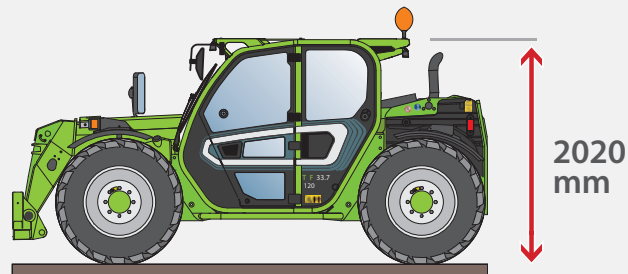
Maximum performance, minimum bulk

We were the first to launch a range of telehandlers dedicated to agriculture in 1996. Today, we proudly present the new Compact modular generation whose low profile version has been purposely designed for poultry applications.



Fan Drive available on the entire range. Radiators always clean!

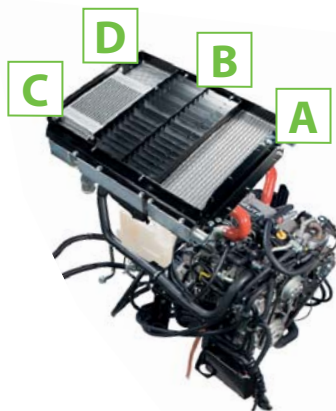
CAB HEIGHT WITH LOWERED CAB (LOW PROFILE)



Thanks to the modular design the cab has been lowered and bolted on its chassis. The cab is the same as standard versions for maximum comfort and safety.

AIR-CONDITIONING SYSTEM

The air flow is distributed evenly inside the compartment and reaches all areas



FAN DRIVE AND DEDICATED RADIATORS

For temperatures less than 40° the fan comes on in an inverted condition for 30" to later return to normal use

- A. Intercooler radiator
- B. Engine radiator liquid
- C. Radiator hydraulic oil
- D. Radiator hydrostatic oil



- The **largest cab** in the category: **1010 mm wide**
- **40 km/h as standard**, unique in its category
- **Pressurized cab** in line with **ISO 10263-3** norms
- **Dedicated hydraulic and hydrostatic** oil circuits
- **Dedicated radiators**
- **Fan Drive** for consistently efficient radiators

Merlo products are Australian Standards 1418.19 and 1418.10 compliant

Safety comes first!



- **Load Chart compliant**

with AS1418.19

- External longitudinal **stability indicator**

- Lateral and longitudinal **level indicators** fitted to the windscreen and RHS glass

- **Boom ram safety blocking device**

- **Anchoring points on the chassis**

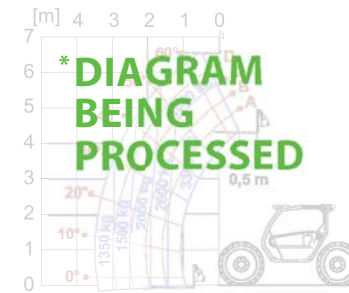
- **Rear camera** starts automatically when engaging the **reverse shuttle**

DATA

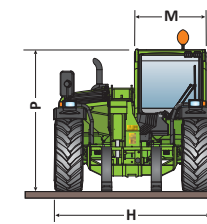
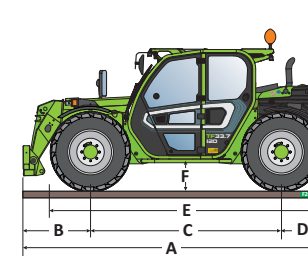
TECHNICAL INFORMATION	TF 30.7 - 100 G	TF 30.9 - 100 G	TF 30.7 - 100	TF 30.9 - 100
Total unladen mass, without forks (kg)	6500	6700	6500	6700
Maximum capacity (kg)	3000	3000	3000	3000
Lifting height (m)	6,7	8,6	6,7	8,6
Maximum reach (m)	3,5	6,7	3,5	6,7
Maximum operating height (m)	*	4,8	*	4,8
Maximum operating reach (m)	*	1,6	*	1,6
Capacity at maximum height (kg)	*	1100	*	1100
Capacity at maximum reach (kg)	*	500	*	500
Turbo motor (displacement/cylinders)	3,8/4	3,8/4	3,8/4	3,8/4
Tier 3 Interim motor power (kW/CV)	74/100	74/100	74/100	74/100
Maximum speed (km/h)	40	40	40	40
BSS hydro-pneumatic boom suspension	○	○	○	○
Fuel tank (l)	80	80	80	80
Hydraulic gear pump (bar-l/min)(bar-l/min)	210/106	210/106	-	-
Hydraulic Load-Sensing pump (bar-l/min)	-	-	210/130	210/130
Fan Drive Pump (l/min)	46	46	46	46
Flow Sharing Distributor	-	-	●	●
Hydraulic oil tank (l)	75	75	75	75
FOPS (ISO 3449) and ROPS (ISO 3471) cab	●	●	●	●
Electro-hydraulic joystick	●	●	-	-
Electronic joystick	-	-	●	●
Hydrostatic transmission	●	●	●	●
Differential lock (A-P)	○	○	○	○
Dual Control Reverse Shuttle (joystick/steering wheel)	●	●	●	●
Inching Control progress control from pedal	●	●	●	●
Permanent four-wheel drive	●	●	●	●
Four-wheel steering	●	●	●	●
Automatic parking brake (when the engine switches off)	●	●	●	●
Work headlights on cab (2 A + 2 P)	●	●	●	●
LED work headlights on cab	○	○	○	○
Change of speed	2 speeds	2 speeds	2 speeds	2 speeds
Standard tyres	405/70 20	405/70 20	405/70 20	405/70 20

● As standard. ○ On request.

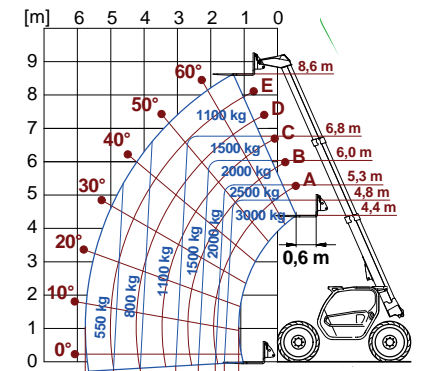
TF 30.7 WITH FORKS



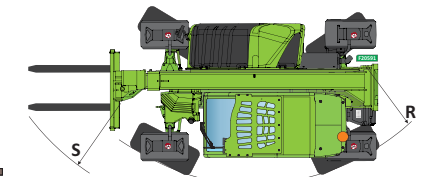
EN 1459



TF 30.9 WITH FORKS



EN 1459



DIMENSIONS POULTRY-FARMER 30.7-30.9

A (mm)	4315	E (mm)	3910	P (mm)	2020
B (mm)	990	F (mm)	340	R (mm)	3930
C (mm)	2740	H (mm)	2100	S (mm)	4660
D (mm)	585	M (mm)	1010		



MERLO GROUP AUSTRALIA PTY LTD

27 Colin Jamieson Dve, Welshpool (Perth), WA 6106 / Tel. (08) 9358 3110 - Fax (08) 9358 4110

120 Toongabbie Road, Girraween, NSW 2145 / Tel. (02) 9688 0600

www.merloaustralia.com.au - info@merloaustralia.com.au